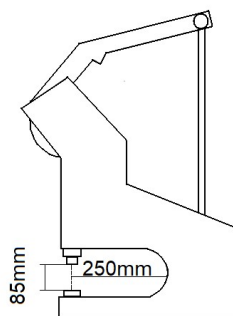


# MOD. G100/L DATA SHEET

METALMECCANICA



## PRODUCT DESCRIPTION

Snap press machine with pedal

## USE

Application of snap buttons, eyelets and small parts in general.

Piercing of fabrics, leather and plastic sheets.

## TYPE OF DRIVE

Mechanical pedal

## STROKE

35 mm

## MAX FORCE

500 kg

## APPLICABLE SMALL PARTS SIZE\*

Ø max 17 mm

## PROCESSING TIME

3÷4 " per cycle

## STANDARD EQUIPMENT

4 feet

## OPTIONALS

Tool holder panel

## WARRANTY DURATION

12 months

## OPERATING AREA HEIGHT

92÷102 cm

## BENCH HEIGHT ADJUSTMENT

Yes

## PEDAL HEIGHT

34 cm

## SIZES

L53xP56xH127÷137 cm

## NET WEIGHT

37 kg

## PACKAGING MODE

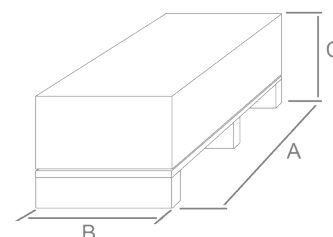
Support disassembled

## STANDARD PACKAGING TYPE

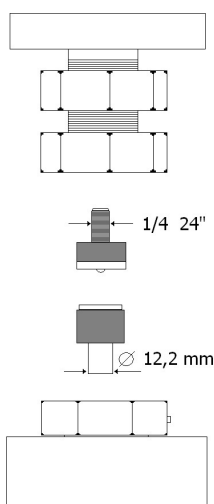
Box on pallet

## PACKAGING SIZE

A= 89 cm B = 49 cm C= 31 cm



## TECHNICAL SPECIFICATIONS OF TOOL HOLDERS



The dies (tools) for small parts can be purchased from the button supplier.

Possibility to have custom tool holders.

\*a standard jeans button was taken as reference

The force required for the application is mentioned in the technical data sheet of the small parts.

## GROSS WEIGHT

40 Kg

